

Ta-dah! EBSCO Is Here!

By Sheryl Cobb, BSN RN
Clinical Quality Coordinator
Quality & Process Improvement

In the ongoing pursuit of Magnet Status for University Health System, we are pleased to announce the availability of an Evidenced Based Practice (EBSCO) tool.

EBSCO is a search engine that enables nurses to access research articles from professional journals online. Access to journals such as American Journal of Nursing, Nursing Administration Quarterly, Critical Care Nurse, and many others are available through this search engine.

This search engine is available through the UTHSCA library as well as other learning institutions. **However, we have now subscribed to this service and have made it available for your use either at work, home, or from any other computer.**

Currently the databases that we are subscribing to, available through EBSCO are:

1. CINAHL
2. Pre-CINAHL
3. Nursing & Allied Health Collection: Comprehensive

How to access EBSCO (you do not need a user name or password):

1. From Home or another computer outside of UHS:
 - a. Instructions are provided beginning on page 2 of this document.
 - b. You may get some pop up security windows for downloading. You need to click YES.
 - c. Allow time for the UHS extranet site and EBSCO to download, do not keep clicking the mouse
2. From UHS
 - a. Open the UHS Intranet home page
 - b. Scroll down to Health Care Links (middle of the home page)
 - c. Click on EBSCO Nursing Database (just above Local Weather

Some things to remember:

1. Only 5 users are allowed to access at once. If you attempt to gain access and can't, try again later.
2. If you are idle more than 30 minutes, you will be disconnected from the database and will have to re-enter.
3. Remember that copyright laws apply. You may print the article out for personal use and articles may be utilized when teaching a class here at UHS.
4. You will not be able to access all journals, such as those published from other countries and lesser known journals.
5. On some articles you may not be able to access the full text or PDF version of articles.

Education on use of EBSCO:

1. We are currently in the process of arranging for an EBSCO educator to conduct a class here at UHS. We are looking at a train the trainer type of format in which we will have identified trainers within UHS. Once that is arranged, information will be sent out.
2. You may access educational materials, listed under the tabs of Tutorials and Support Materials at the following website: www.support.epnet.com

Trouble shooting and access issues:

1. When you log on from home and you get in to the desktop where the EBSCO link is located, make sure you look at all of the icons on the desktop. The EBSCO icon may not necessarily be in the exact location as indicated on the attachment.
2. Many of the articles are in PDF format. If you do not have Adobe Acrobat Reader on your computer at home, you will need to download it (it's free) at: Before downloading, ensure you

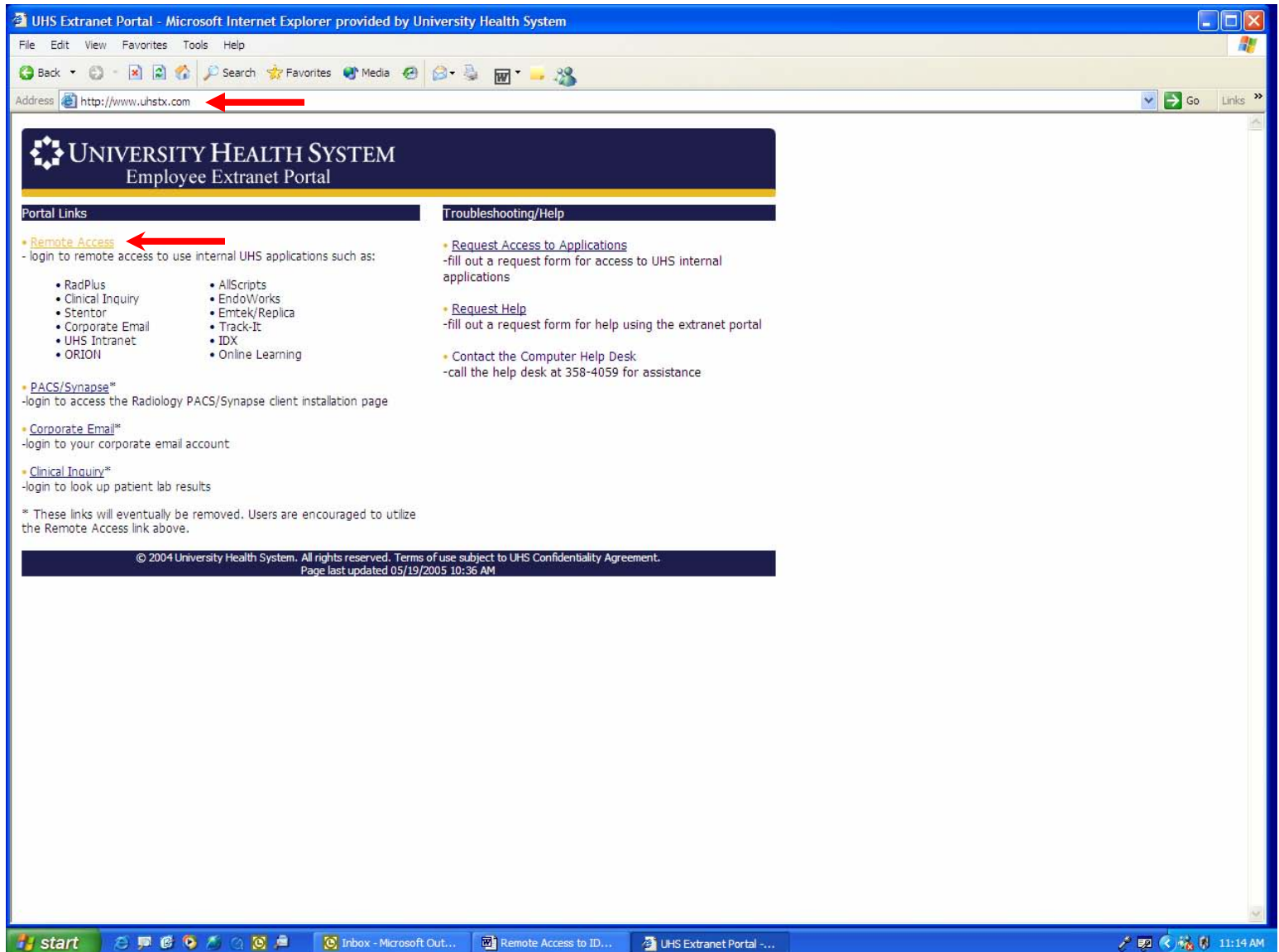
read the segment on systems requirements for your computer. If you are unsure how to do this, ask someone to assist you.

<http://www.adobe.com/products/acrobat/readstep2.html>

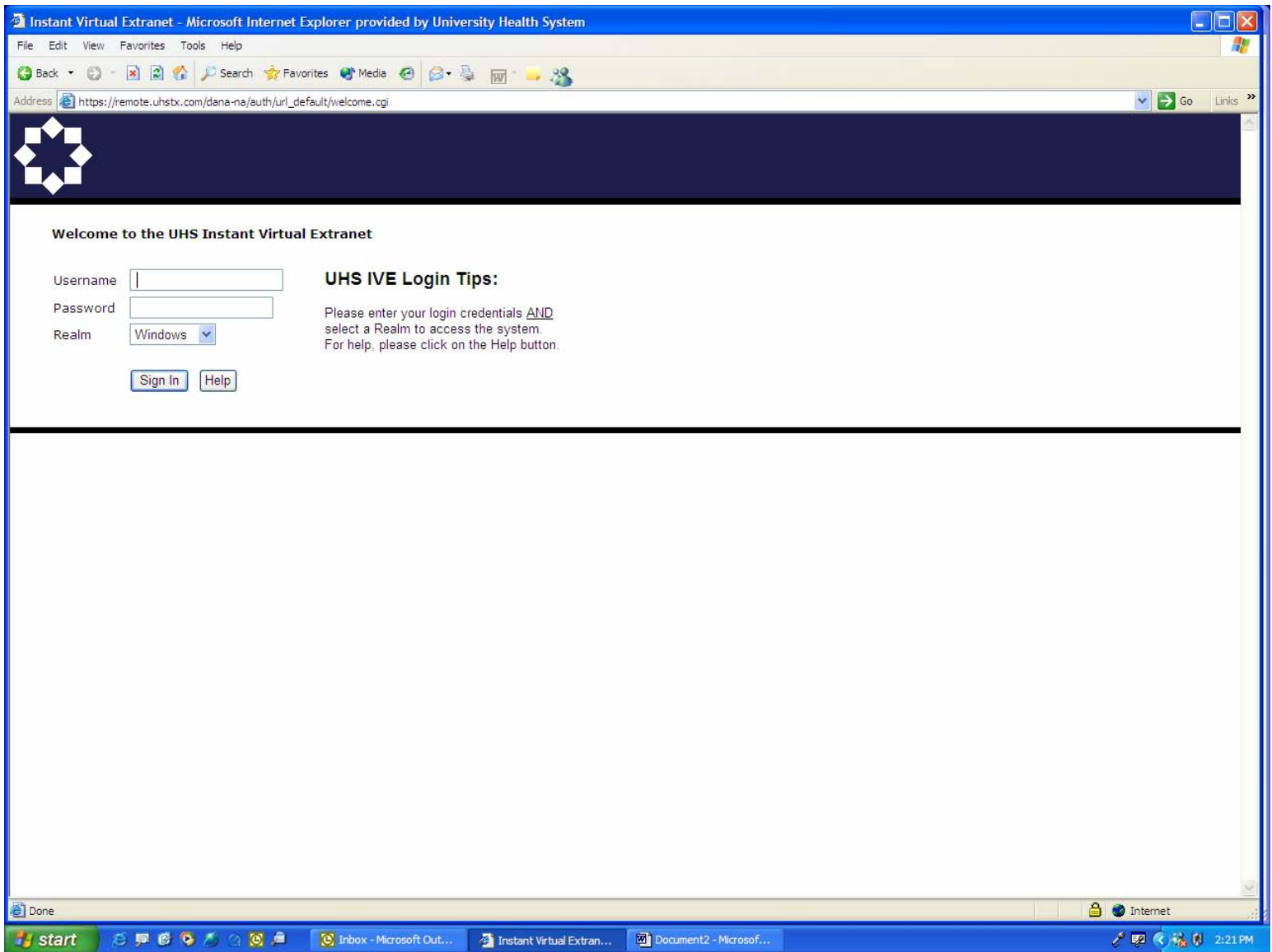
3. If you log on from a computer outside of UHS and the EBSCO link is not there, please email or phone Peggy McLemore, Data Security, 8-8290.

If you should have problems other than just accessing the link, contact Sheryl Cobb (8-0277) or Michelle Ingram (8-4244) at Quality & Process Improvement.

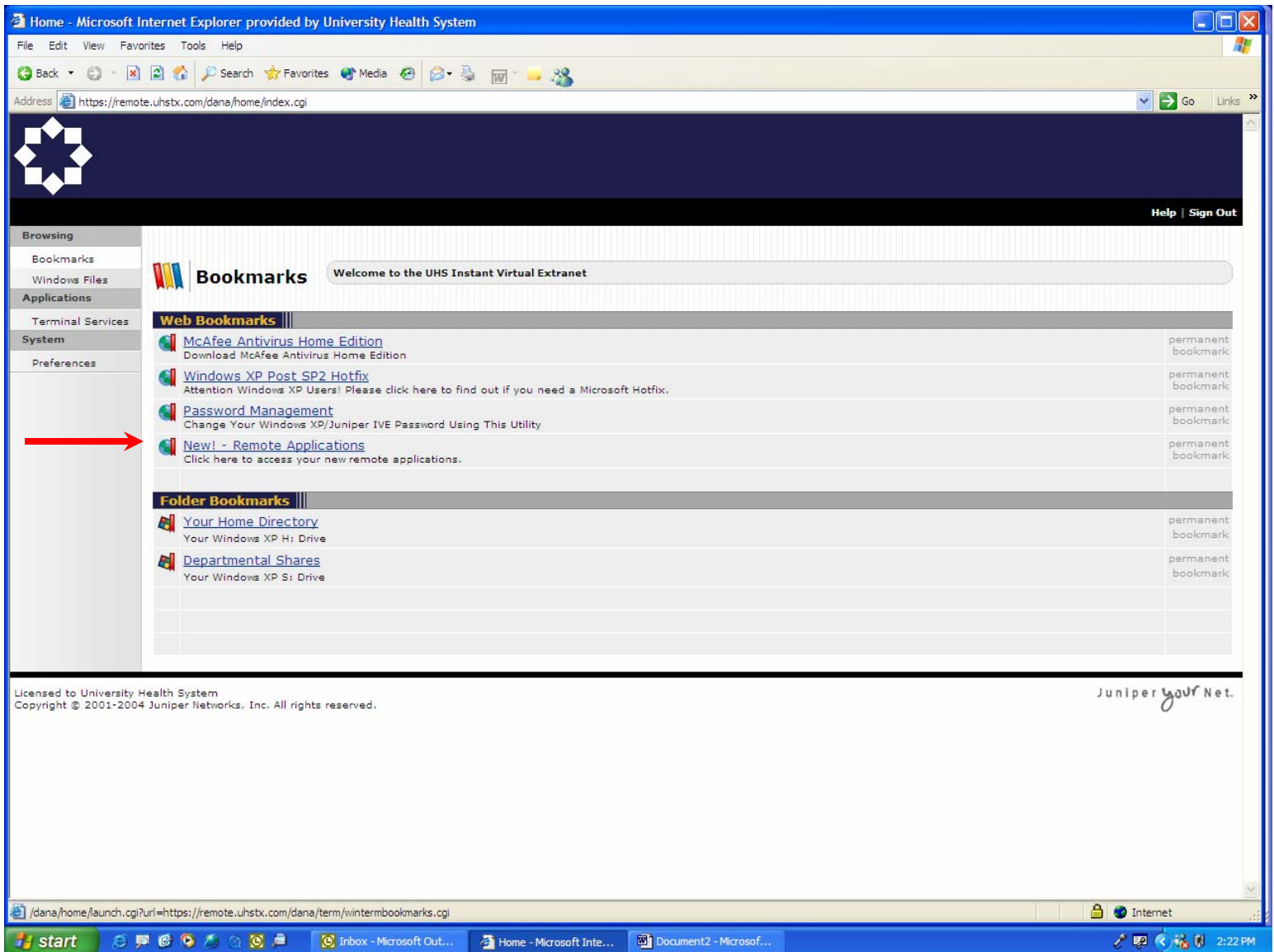
The following instructions will guide you in accessing EBSCO remotely.



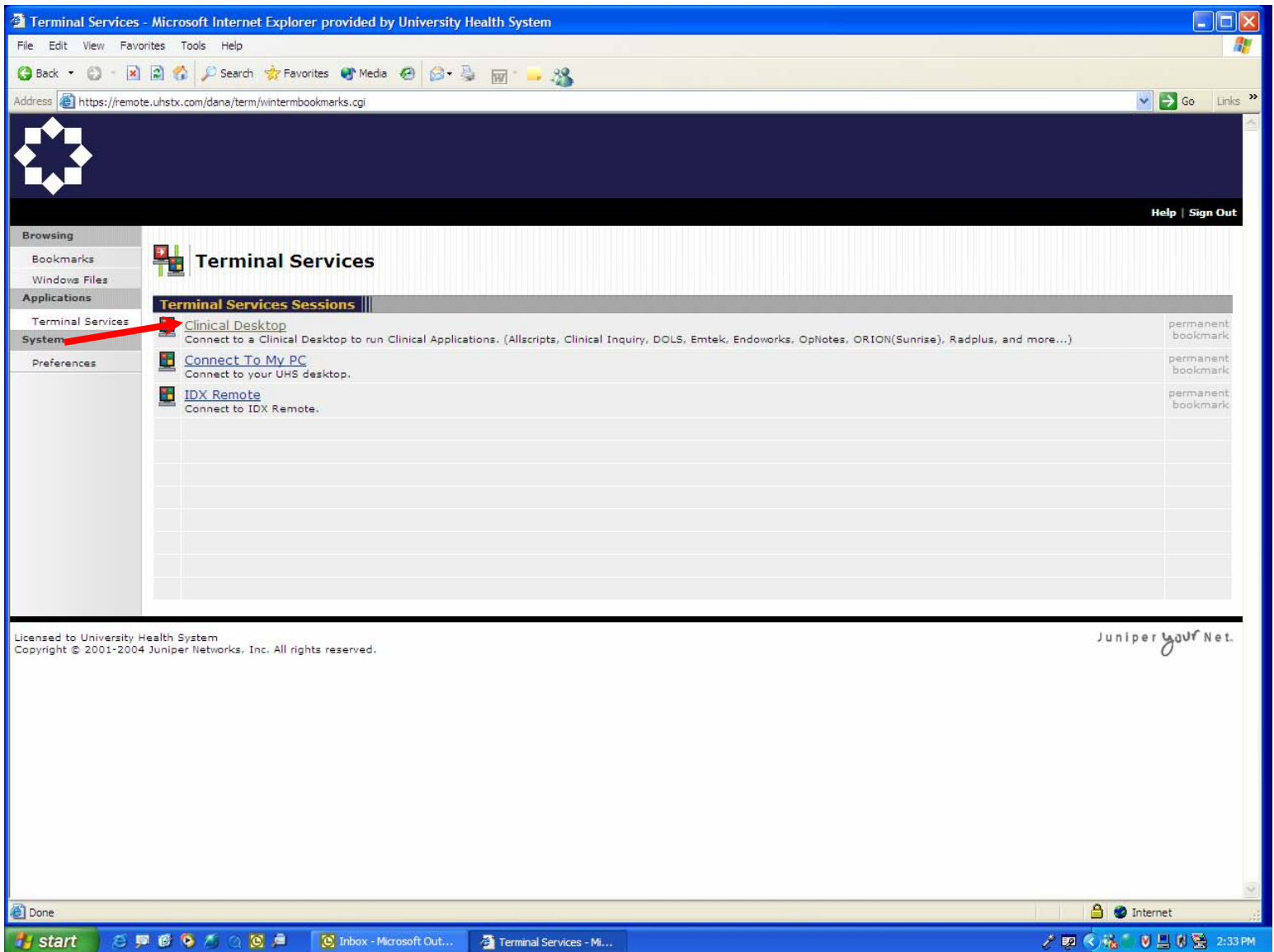
1. Enter <http://www.uhstx.com> in the address bar of your internet browser.
2. You should see the University Health System Employee Extranet Portal screen above.
3. Click on the Remote Access Link.



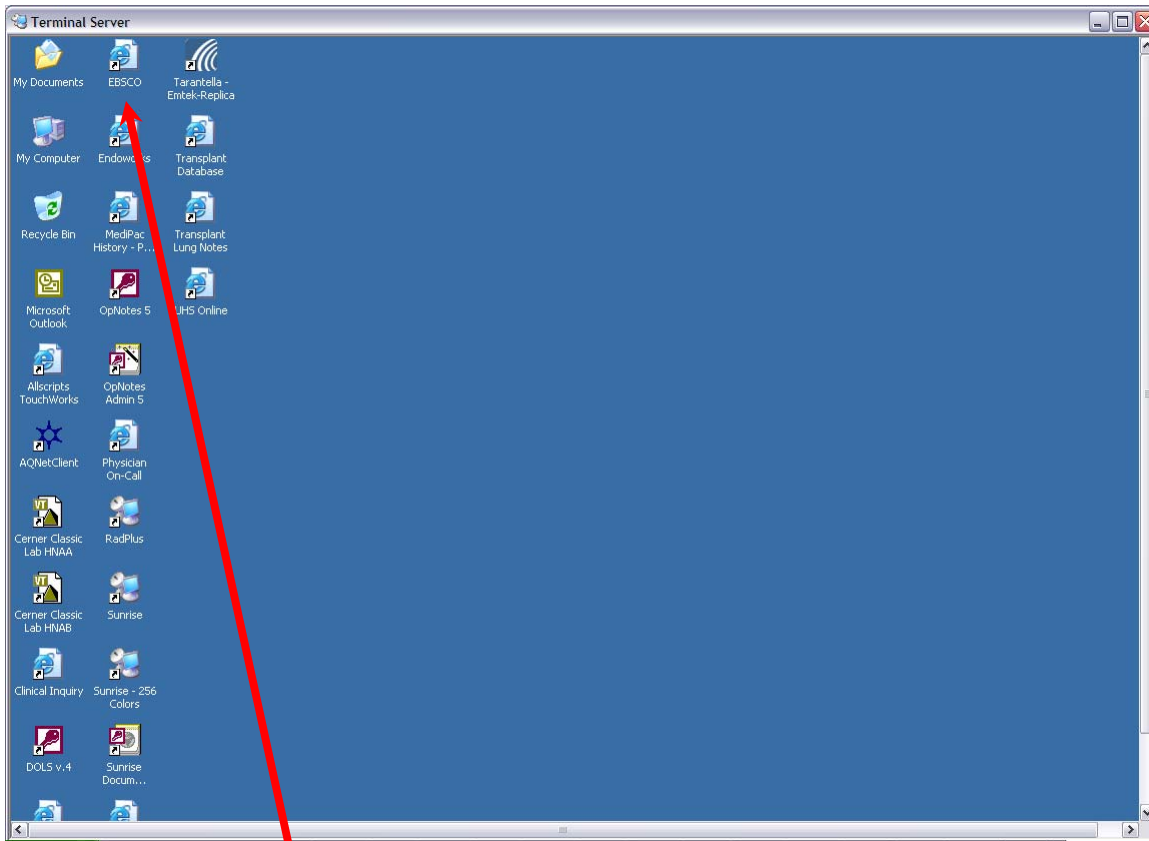
4. You should see the Welcome screen as shown above.
5. Enter your Windows XP userid and password.
6. Click on the Sign In button.



7. You should now be at the Bookmarks screen as shown above.
8. Select the New! – Remote Applications link.



9. You should be at the Terminal Services screen as shown above.
10. Next, click on the Clinical Desktop link.



Double click on the EBSCO icon. This will take you into the EBSCO page.